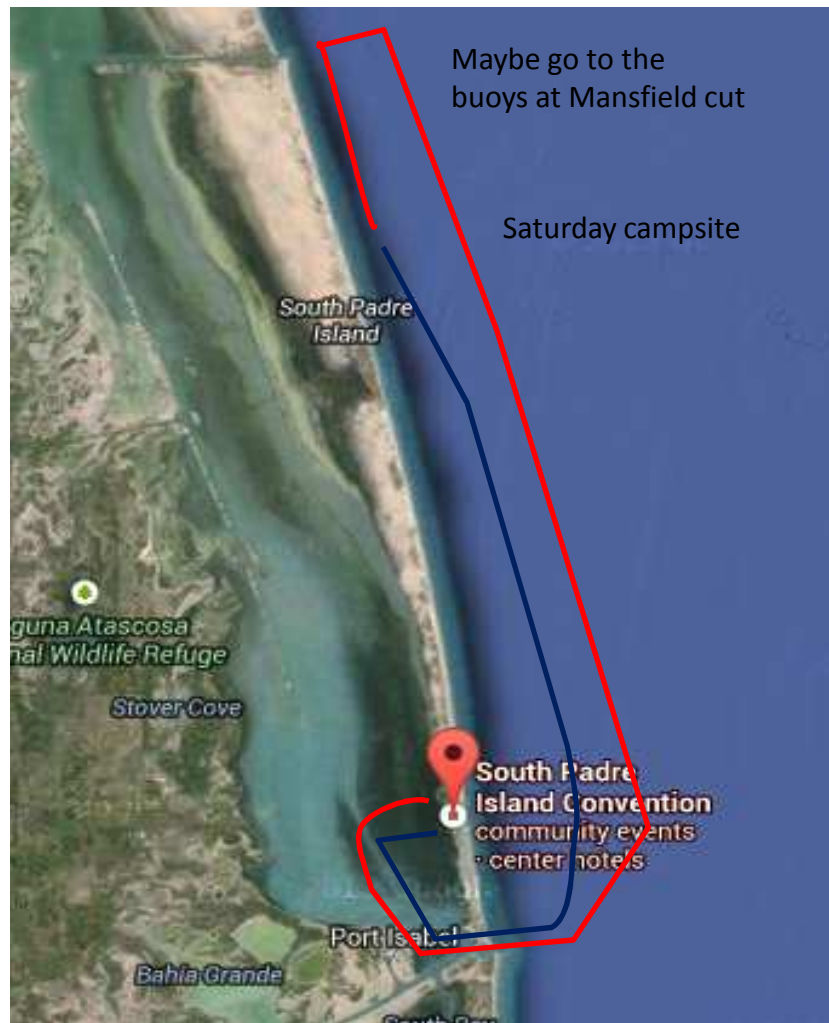


# Ruff Riders 2014 course



- “Double J”.....start at the flats....go out the Port Isabel jetty....North to Mansfield beach camp spot. On Sunday go back South and through Port Isabel to finish.

# Ruffrider “Double J” course

- Advantages over “up the ditch”.
  - Entirely on South Padre Island : hotels for family & crew, beach camping is on breezy side of island, dinner service is easier to arrange.
  - Crews do not have to drive to Corpus to pick up boats.
  - Both days : minimal sailing in the narrow, shallow intracoastal
  - Easier to retrieve boat both days if any trouble – just land on the beach
- Advantages over “round the island”.
  - Saturday : minimal sailing in the narrow, shallow intracoastal
  - Do not have to sail through narrow cut at Port Mansfield, the jetties @ Port Isabel are wider
  - Easier to retrieve boat Saturday if any trouble – just land on beach side
- Cons : longer drive home afterward?